

# STICKFORD VILLAGE NEWS

AND DIARY DATES NOVEMBER 2025 ISSUE 109



<b>Remembrance Sunday</b>	pg 3	<b>Extending Leads: Friend or Foe?</b>	pg 4
<b>Stickford Community Centre</b>	pg 7	<b>News from St Helen's Church</b>	pg 8
<b>Unwind, Create &amp; Connect</b>	pg 9	<b>Update from College student Beth</b>	pg 10
<b>Misericords</b>	pg 10	<b>Friendly Faces</b>	pg 11
<b>The Pub, Clubs and Groups</b>	pg 15	<b>From our Parish Council</b>	pg 16
<b>Stickford Charities</b>	pg 17	<b>Events</b>	pg 18
<b>Church Services</b>	pg 19	<b>What's On</b>	pg 20
<b>Useful information</b>	pg 21	<b>Personalised Care</b>	pg 22
<b>Scam &amp; Fraud Awareness</b>	pg 22		



# Stickney Wellbeing Hub

Our Wellbeing Hubs provide a safe and supportive space for those experiencing mental health and wellbeing challenges.

**EVERY MONDAY | 10AM-12PM**  
(Excluding Bank Holidays)

**Wellbeing Walk Every Fortnight (From 15 to 45 minutes)**  
in partnership with Lincolnshire Coop



## Where to find us

Stickney Youth Centre, Hall Lane,  
Boston, PE22 8BA

## Need urgent help now?

Call 111 select mental health option  
In a life-threatening emergency call 999



## For more information

Call or WhatsApp our Community Connector. You can also find updates on our social media too.

**David Bruce** (Lead Community Connector)  
07939 092 585, david.bruce23@nhs.net

H.A.Y. helping people find local resources for mental health and wellbeing. [www.haylincolnshire.co.uk](http://www.haylincolnshire.co.uk)



# Dear Reader

Welcome to the Winter edition of the Newsletter!

We have Guy Fawkes, Remembrance Sunday, Thanksgiving, Christmas, Epiphany and Burns Night coming up so what have you all got planned?

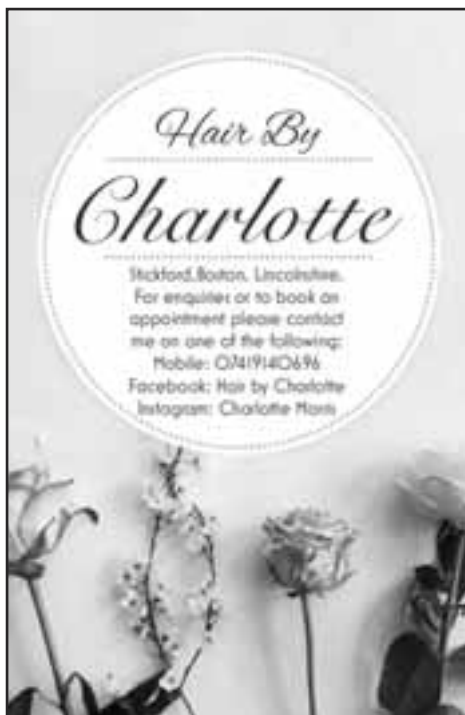
There is no need to hibernate this season - Stickford is brimming with festive fun, cosy gatherings, and community cheer. From craft sessions to coffee mornings, wellbeing walks to seasonal celebrations, there's something for everyone. Turn to **pages 18–20** for inspiration, dates, and details.

A big thank you to our contributors, advertisers, and volunteers for their incredible support.

Deadline for the next issue is **Wednesday 31<sup>st</sup> December 2025**. Please submit all copy to: [newsletter@stickfordcc.uk](mailto:newsletter@stickfordcc.uk)

## Advertising rates:

If you would like to place an advertisement, please contact us at [newsletter@stickfordcc.uk](mailto:newsletter@stickfordcc.uk) to discuss your requirements. Please submit adverts/ pictures in .jpg format in actual size. If you don't have an advert, please talk to us about how we can help you.



REMEMBRANCE  
SUNDAY

Please join us on  
**Sunday 9<sup>th</sup> November**  
for our  
**Remembrance Day Service**  
at the War Memorial  
at 10.45am.

## STICKFORD VILLAGE NEWS

is produced four times a year and delivered to all homes in Stickford and can be emailed to those in surrounding areas. We also welcome contributions from all residents.

Please contact us at [newsletter@stickfordcc.uk](mailto:newsletter@stickfordcc.uk)



# Extending Lead: Friend or Foe?

by Jeri Omlo BSc. M.Ed, Member APBC (Retired)

In 2018, there were 30 serious hand injuries resulting in hospitalisation in Cornwall alone.

- **2020** A dog trainer lost 2 fingers when trying to stop a dog from going for another. They instinctively grabbed for the lead.

- **2023** A Cockapoo was hit by a car when it decided to chase a cat on a fully extended lead. Thankfully the car was going slow and there were no injuries.

And finally, July 2025 a local woman was walking her dog on an extending lead when her phone rang. Not thinking, she answered it, getting distracted in the process, not noticing the dog dashing off at breakneck speed. When reaching

the end of the lead, the owner was off her feet and fell on her arm. The result, two fractures in her shoulder.

The mere mention of extending leads has dog owners and professionals warring with each other. Many, like me would not touch them come hell or high water. Others will not walk their dogs on anything else. Let's look at the pros and cons.

They give a dog more freedom and flexibility than a normal lead. People use them to practice a recall safely and provide mental stimulation through scent work. However, they pose road safety risks as seen above, reduce the owner's control over the dog, and reinforce



pulling on the lead something most owners want to stop. They are hard to see making them a trip hazard for dogs, the owners, and other people. The handles are heavy and easily pulled out of hand. Can you imagine how your frightened dog may feel when this handle is dragging behind them when they are running away?

But most importantly they can cause serious injuries to both dogs and people. Many a dog has suffered "whiplash" when running full force and suddenly hitting the end of the lead, as well as injuries to windpipes and tracheas. There have been severe ruptured discs in both the neck and spine of the dog, as well as strangulation, lacerations and burns to both the dog and their owners who try to "grab" the lead when it becomes tangled or wrapped up.

When examining the above, how could ANYONE still walk their dog with a lead like that? "It won't happen to me; I've been using them for years". That is exactly what my friend said when she lost two fingers through amputation due to injuries so severe caused by an extending lead!

Rather than risk issues, when walking on the street, use a normal lead of about 2 metres in length. If in a safe area where you want to give your dog more freedom, use a training lead of about 10 metres. They are far, far safer for your dog and you.

## ***The Sausage Shack***

**Home bred, reared, fed,  
and prepared quality meat**

Local Rare Breed pork

Lincolnshire sausages

Dry Cured Bacon

Orders taken for half or  
whole pigs and lambs

**Support your  
local producer at  
Kasanga Manor,  
Hagnaby Lane,  
Keal Cotes,  
Spilsby, PE23 4AL  
07836 691110**



## **TREAT YOUR PUP TO PURE GOODNESS!**

### **100% Natural Ingredients**

Our treats are sourced from the finest, all-natural ingredients to ensure your dog gets the best nutrition.

### **Large Stock Available**

Always fully stocked to keep your furry friend happy and healthy.

### **Wide Variety**

From chewy delights to crunchy bites, we have a treat for every dog's taste.

### **Locally Stocked in Spilsby**

Proudly available with love and care in the local community from your favourite groomer.

☎ 07510 152507

📱 /PipsParlour LTD

📍 14 Market Street, Spilsby, PE23 5JT



# Scentiments

*Floral Designs*

Contact Julie Pagram

Local & international deliveries  
Specialists in bespoke funeral tributes  
& Weddings

14 The Terrace, Spilsby, Lincs. PE23 5JR  
01790 753539 Mob: 07887713055  
[www.scentimentsfloraldesigns.co.uk](http://www.scentimentsfloraldesigns.co.uk)



## CMC LANDSCAPES



Darren Clark 07853204556

Landscaping, Maintenance, Lawn Care  
Tree Surgery & Stump Grinding & Removal Service  
Fencing & Decking. Brickwork & Patios  
20 Years Experience • Free Quotations

# WHAT'S HAPPENING AT STICKFORD COMMUNITY CENTRE (SCC)

Registered Charity No. 516274

## UPCOMING EVENTS

**Bingo — Join us 10<sup>th</sup>/24<sup>th</sup> November, 8<sup>th</sup>/15<sup>th</sup> December and 5<sup>th</sup>/19<sup>th</sup> January 2026** for our Prize Bingo Nights in support of the SCC and the Church! There is a 12-page book giving you lots of chances to win one of an array of fun prizes, the Cash Flyer and our Raffle.

### **Quiz Night – 31st January 2026.**

Gather your squad and join us for a night of fun, facts, and fantastic prizes! Bring your A-game, your thinking caps, and your competitive spirit. Teams of 4-6 welcome—don't miss out! Reserve your table as we do get busy. Call Jennie on 07966 139641 or Alan on 07572 189466.

### **Stickford Community Centre Available for hire**

*Use this space to host Meetings, Training, Charity events, Conferences, Dances, Interest Groups, etc.*

We have Wi-Fi, can accommodate up to 100 standing and 60 seated.



**Contact Hannah on 07356 054609  
or email [events@stickfordcc.uk](mailto:events@stickfordcc.uk)**

*You are welcome to bring your own drink and nibbles for our Bingo nights and Quiz night.*

Looking for good company and a warm welcome? Join the new **Friendly Faces** group on the **2nd and 4th Fridays of each month**, from **10am to 12 noon**. Enjoy a **coffee**, a **chat**, a **game**, or even **learn a new craft**—there's something for everyone, and all are welcome!

### **Ways you can help the Community Centre:**

1. Sign up and play [theselcplottery.co.uk](http://theselcplottery.co.uk)
2. Sign up and play easyfundraising: [www.easyfundraising.org.uk/causes/stickford-community-centre/](http://www.easyfundraising.org.uk/causes/stickford-community-centre/)
3. Recycle and repurpose your wardrobe in the clothing banks in the Community Centre car park.

### **Lincolnshire Co-op Community Champion**

*Stickford Community Centre has been selected as a Lincolnshire Co-op Community Champion. This means that the Co-op will be raising money for us until 7 March 2026. Please can we ask everyone to use their dividend card during this period as it will boost the funds we receive.*

# News from St Helen's Church

In the church November is known as the month of remembrance. On 1st November we have All Saints Day when we reflect on the lives of the saints and martyrs who have gone before us. Similarly on the same day we have All Souls Day, when we remember loved ones who have passed away. In December we celebrate the arrival of Jesus as a baby and then in January we celebrate Epiphany, which is when the three wise men, or three kings, visited Jesus.

Rev Judith Simons

## Our Bookshop!

Our bookshop is **open every day** between 10am and 4pm. Everyone is welcome to come along and browse (you can even make yourself a tea or coffee). There are no fixed prices but donations in cash or via card (contactless) are appreciated. Donations of books in good

condition are welcome – crime or romantic fiction are the most popular.

## Fundraising

Our village markets and other ad hoc events continue to be well supported – thank you. We are always on the lookout for prizes for our tombola and raffles (we need about 50 each month). Donations of new toiletries, confectionery, biscuits, etc are always needed. You can leave donations in the church on the back pew or email [st.helens.stickford@gmail.com](mailto:st.helens.stickford@gmail.com).

## Village Market

Our last village market of the year is **Saturday 15<sup>th</sup> November**. So pop along for a lively morning filled with local flavour and friendly faces. The Village Market will then reopen March 2026.

Browse a brilliant selection of local produce. Grab a cuppa, enjoy some refreshments, and take your chances on our ever-popular tombola.

It's a great way to connect with neighbours and support local businesses — we'd love to see you



**The Friends of St Helens Church, Stickford, are looking for a free Christmas tree for the churchyard.**

**Ideally, it wants to be 15-20ft tall and will be cut down by ourselves early December.**

*Many thanks.*

there! To book a stall or for further information, please contact Barbara Pearson on 07423 056337.

### **Harvest Supper and Carol Service**

The Harvest Supper was held on the evening of Monday 22 September and was well attended by Stickford residents and friends from elsewhere nearby. The usual supper of sausages, peas and mashed potatoes followed by apple pie or trifle was much appreciated and the auction of produce that followed raised more than £400 for church funds. Our thanks go to all those who contributed in any way to the success of the evening – the attendees and those involved in

preparing the potatoes and puddings, serving in the kitchens, donating produce and raffle prizes, Judith Simons for leading the singing, and Richard Richmond for acting as auctioneer, etc. In particular, our thanks go to the four young ladies who served us so cheerfully and efficiently all evening.

We hope that you will all come to our **Carol Service** which will be held at 3.00 pm on **Saturday 13<sup>th</sup> December** in Stickford Church and which will be followed as usual by a barbeque with sausage patties, burgers and mulled wine and accompanied by the usual band.

---

## Unwind, Create, and Connect: Join the Relax & Craft Club

Discover Friendship and Creativity at the Stickford Community Centre. The Relax & Craft Group welcomes crafters of all levels to gather monthly at Stickford Community Centre for a day of creativity and camaraderie. Whether you enjoy card making, beading, quilting, knitting, cross stitch, diamond art, or another craft, there's something for everyone in our supportive group.

Meetings are held on **the third Wednesday of each month**, from 9.30am to 2.30pm, where members can share skills, learn new techniques, and enjoy unlimited hot drinks and biscuits—all for just £3.50 per session, which also includes a free raffle ticket.

In addition to our regular sessions, we offer four workshops each year—in March, June, September, and November—focusing on new crafts and ideas. The club provides a warm, safe space during the colder months, making it the perfect retreat for creative minds.

**Upcoming dates: 19th November, 17th December, 21st January 2026**

Curious to join? **Contact Sharon at 07505 494355 or Karen at 07474 933667.** Find us at Stickford Community Centre, PE22 8ES. At Relax & Craft Club, there's always a welcoming seat and a project ready for you.

# Back to College and Christmas

Hi everyone it's me again! As I begin my second year studying Art and Design at college, I feel more excitement and less nervous. I'm finally starting to feel like I'm getting somewhere in life and I'm starting to discover what career path I'm going to take.

Believe me, college can be daunting at first but once you get the hang of things, it's a lot more relaxed. I know my way around now, literally and creatively and I'm ready to start mapping out my future. There is something exciting about a fresh sketchbook and a new brief and I can guarantee you, you'll be well looked after at Boston college. The tutors are so welcoming and you have all the right courses. It's great! As much as I'm focused on getting my head down and being creative, I'd be lying if I said I wasn't already looking forward to Christmas, can anyone relate?

For me, Christmas isn't just about presents and decorations, it's about being with the ones you love. Am I right? Christmas is my favourite time of the year so I sure can't wait for it to come round. And let's be honest it's going to come round fast it always does.

Thank you for reading again, bye everyone. - Beth

---

## Misericords

One of the mythical beasts described in the Physiologus is **the unicorn**.

As described in a 13<sup>th</sup> century manuscript "It is a small animal like a kid. It is exceedingly swift; having one horn in the middle of its head and no hunter can capture it, but it is taken by this device.



The hunter places a virgin near

to the spot where it has its abode. When it sees her, it runs to her, and lies down placing its head in her lap, doing her no harm. Then come up the hunters and kill it. If she is not a pure maid, the unicorn will not sleep but kills the damsel who is not pure." The Boston misericord clearly shows the maid and the hunter killing the unicorn, but the horn of the unicorn is either truncated or snapped off at some stage. *Dr Alan Pethybridge*



**Friendly  
Faces** 

Friendly Faces is a new group of local volunteers who have united to provide a **fun, friendly, free** community coffee morning with crafts, board games, cards etc and a chance to chat with friends, old and new.



It's a great place to come and meet people and possibly learn a new crafting skill or re-visit an old hobby



The twice monthly events, held on the 2<sup>nd</sup> and 4<sup>th</sup> Fridays at Stickford Community Centre, are called

## **'FEEL GOOD FRIDAYS'**

and we really hope that everybody who comes along will indeed have a great time and 'feel good'!

Our first event was held on 12<sup>th</sup> September 2025, and was very well attended. We really look forward to welcoming even more of you over the coming months.



**Our festive special will be on 12th December with yummy treats, party games and a free raffle.**



**Your Friendly Faces team are**

Hannah, Heather, Deb,  
Graham & Martina

Please do drop in between  
10am and 12 noon, to say  
hello and join us  
for a cuppa



We are very fortunate to have received support with initial funding from the Spilsby & District Wellbeing Hub and refreshments from Lincolnshire Co-Op.



This has enabled us not only to start at Stickford, but also to trial 'Feel Good Fridays' at East Kirkby Village Hall on the 1<sup>st</sup> and 3<sup>rd</sup> Friday from 7<sup>th</sup> November 2025.

**For more info contact: [friendlyfaces2025@hotmail.com](mailto:friendlyfaces2025@hotmail.com)**



## **IN THE EVENT OF A FLOODING EMERGENCY, YOU SHOULD FOCUS ON THE SAFETY OF YOURSELF AND YOUR FAMILY**

### **IF YOU NEED TO EVACUATE**

If there is an immediate risk to life, **call 999** and ask for the Fire Service

### **IF WATER HAS ENTERED YOUR HOME OR BUSINESS**

If water has entered the living areas of your property and you cannot stay safely:

#### **HOMEOWNERS**

Contact your insurer directly

If you are not insured, contact your district council's housing team for assistance

#### **PRIVATE RENTERS**

Notify your landlord immediately

#### **COUNCIL TENANTS**

Contact your district council's housing team

or visit [www.lincolnshireresilienceforum.org/risks/river-surface-groundwater-flooding](http://www.lincolnshireresilienceforum.org/risks/river-surface-groundwater-flooding)

### **IF WATER IS LIKELY TO ENTER YOUR PROPERTY**

If possible, obtain sandbags from a local supplier for faster support

If you cannot access sandbags, report your need on [www.fixmystreet.lincolnshire.gov.uk](http://www.fixmystreet.lincolnshire.gov.uk)

Alternatively call 01522 782082 (Please note that it is quicker to report online)

### **WE DO NOT HAVE A DUTY TO PROVIDE SANDBAGS BUT WILL MAKE EVERY EFFORT TO ASSIST**



### **TO REPORT FLOODING**

**FLOODING AFFECTING THE HIGHWAY** Report it on FixMyStreet  
**FLOODING TO PROPERTY OR LAND** Let us know via FixMyStreet or call 01522 782082 (Note there may be delays during high demand)

### **STAY INFORMED**

For the latest updates during a flooding incident

Follow **LINCOLNSHIRE LRF** on X, Facebook or online at [www.lincolnshireresilienceforum.org/news](http://www.lincolnshireresilienceforum.org/news)

Listen to **BBC RADIO LINCOLNSHIRE** online, on DAB, or on **94.9FM / 104.7FM**

Sign up to Flood warnings at [www.gov.uk/sign-up-for-flood-warnings](http://www.gov.uk/sign-up-for-flood-warnings) and [www.check-for-flooding.service.gov.uk/alerts-and-warnings/lincolnshire#warnings](http://www.check-for-flooding.service.gov.uk/alerts-and-warnings/lincolnshire#warnings)





# Stickford Wellbeing Hub

Our Wellbeing Hubs provide a safe and supportive space for those experiencing mental health and wellbeing challenges.

**1ST SATURDAY OF THE MONTH | 9AM-12PM**

**Wellbeing Walk from 10am (From 15 to 45 minutes)  
in partnership with Lincolnshire Coop**

📍 Stickford Community Centre, PE22 8ES

**David Bruce** (Lead Community Connector)  
07939 092 585, davidbruce23@nhs.net



**For more information**

Call or WhatsApp our Community Connector. You can also find updates on our social media too.

H.A.Y. helping people find local resources for mental health and wellbeing. [www.haylincolnshire.co.uk](http://www.haylincolnshire.co.uk)





## Specialty Homemade Artisan Italian Products



Tel: 07903 828210

Email: [mamaschillidelights@gmail.com](mailto:mamaschillidelights@gmail.com)



Facebook: Mama's Chilli Delights

Instagram: @mamaschillidelights



**Mamas  
Chilli  
Delights**



**Athlete's Foot • Thickened Nails (Fungal Infection)  
Toe Nail Clipping • Cracked Heels • Verrucae  
Corn (Soft & Hard) • Diabetic Foot Assessment  
Routine Nail & Foot Care • Ingrowing Toe Nails**

**Vinnie Wardell DipCFHP MPSPract**  
**Foot Health Practitioner**  
[www.justvinfootcare.com](http://www.justvinfootcare.com)

**Call Vinnie now:**  
**01205 844422 • 07377 411321**  
**Home visit appointments available**

# THE PUB, CLUBS & INTEREST GROUPS

## The Pub...

### THE RED LION

Come join our regular activities of:

**Wednesday** Friendly Darts

**Thursday** Bingo 7pm Cash Prizes!

**Sunday** Meat Raffle 4pm

followed by Open the Box draw.

## The Clubs...

### STICKFORD LADIES

#### SOCIAL CIRCLE

Join us at Stickford Community Centre on the second Monday of each month at 1:30pm for friendship, fun, and community spirit. We enjoy guest speakers, outings, and fund-raising throughout the year. Visitors welcome – just £2! For more details, contact **Teresa on 07471 932821**.

### THE KEALS CLUB

The Keals Club is for the over 50s from Stickford and surrounding villages and everyone is welcome. The club meets every 2<sup>nd</sup> Tuesday of the month, 2pm to 4pm and enjoys speakers and demonstrations, together with raffles, auctions and game afternoons. Afterwards there is a chance to chat with refreshments. Visitors welcome – £2. **Contact Dawn on 07907 053128** for more info.

### FRIENDLY FACES & AND 'FEEL GOOD FRIDAYS'

We are a new group of local volunteers who have united to provide a fun, friendly, free community coffee morning with crafts, board games, cards, etc and a chance to chat with friends old and new. For more information contact **friendlyfaces2025@hotmail.com**.

## Interest Groups

### STICKFORD LOCAL HISTORY GROUP

We meet on the 3<sup>rd</sup> Thursday of the month. Meetings start at 7.30pm. Members £1. Non-members £2.50. Everyone is welcome. Stickford History group have four books all available from **Jill Catchpole on 01205 480249**.

### RELAX AND CRAFT GROUP

Join us on the 3<sup>rd</sup> Wednesday of every month from 9.30am - 2.30pm for a relaxed and friendly gathering. Admission: £3.50, which includes unlimited drinks and a free raffle ticket. We also host four affordable workshops throughout the year. For more details, contact **Sharon (07505 494355) or Karen (07474 933667)**.

*Continued on next page>>>*

### THE STICKFORD WALKING GROUP

meet every Thursday at Thistledown, The Cul-de-Sac at 9.30am.

Contact Clive via email: [cll.clive.kingswood@gmail.com](mailto:cll.clive.kingswood@gmail.com) or call 07852 180972.



## **Wellbeing Hub and Wellbeing Walks**

Our Wellbeing Hub offers a safe, supportive space for anyone experiencing mental health or wellbeing challenges. Whether you're looking for a quiet moment, a friendly chat, or just a change of scenery, you'll be warmly welcomed.

- At 10am, join us for a gentle Wellbeing Walk around the village (30–45 minutes)
  - Enjoy light refreshments, good company, and little things to make you smile
- No pressure, no booking—just come as you are.

## **New Personalised Local House Cleaning Service**

*Excellent References  
DBS Checked  
Reasonable Rates*

**Call Oksana on  
07519-177820**



## **FROM OUR PARISH COUNCIL**

**Chairman: Lesley Reeson**

07903 833460

**Vice Chairman: John Howlett**

01205 481361

**Pam Bryant:** 01205 480410

**Clive Kingswood:** 07852 180972

[cllr.clive.kingswood@gmail.com](mailto:cllr.clive.kingswood@gmail.com)

**Tony French:** 07765 868436

[cllrfrench@gmail.com](mailto:cllrfrench@gmail.com)

**Nicki George, Parish Clerk:**

[stickfordparishclerk@gmail.com](mailto:stickfordparishclerk@gmail.com)

or 07796 771036

**Website:**

[stickford.parish.lincolnshire.gov.uk](http://stickford.parish.lincolnshire.gov.uk)

### **Councillor Vacancies**

There are two openings on the Parish Council. Interested? Come to a meeting or contact the Parish Clerk to learn more.

### **Remembrance Service**

**Sunday 9<sup>th</sup> November**

The Council will lead this year's service at the War Memorial at 10.45am.

### **Parish Council Meetings**

**9<sup>th</sup> December, 13<sup>th</sup> January 2026**

**Cllr Terry Taylor JP, ELDC**

ELDC Rep for Halton Holegate

M. 07368 538099

E. [terry.taylor@e-lindsey.gov.uk](mailto:terry.taylor@e-lindsey.gov.uk)

**Cllr Marie Lisa Hume**

CC Rep for Wainfleet

E. [cllr.m.hume@lincolnshire.gov.uk](mailto:cllr.m.hume@lincolnshire.gov.uk)



# Stickford Charities

**Stickford Relief in Need** Charity/  
Educational Charity final meeting  
date for 2025 is 19 November 2025.

Stickford Relief in Need Charity makes grants to anyone living in the parish in financial need and to support other charitable and voluntary organisations operating in the parish. All applications welcome.

## **Bus service**

The Charity currently provides a **free, door to door bus service once a month** – usually to Boston on the second Wednesday and Horncastle on the fourth Thursday of the month, for those residents of Stickford without access to their own transport and those who can show a genuine need to use the service, even if they have their own transport as well. If you would be interested in using the bus service please contact: **Pam Bryant, Beauport, Cul de Sac, Stickford 01205 480410**

Anyone resident in Stickford is eligible to use the service and we do need more users so if you would be interested please get in touch with Pam.

## **Next Charity Bus Dates:**

12<sup>th</sup> November – Boston,

11<sup>th</sup> December – Horncastle and  
January – TBC (please check the  
date with Pam Bryant)

## **Christmas grants**

The Stickford Relief in Need Charity makes cash grants at Christmas to pensioners, single parents, disabled children and adults and anyone else living in the parish who is in financial need. If you have not received a payment in the past and believe you would be eligible to receive one, please write with details before our next meeting on 19th November 2025 to the Clerk to the Trustees - details below.

## **Educational grants**

Stickford Educational Charity makes financial grants towards any educational objectives, including for equipment, books, courses and experiences, for people of any age resident in the Parish of Stickford (including those normally resident there but attending university or college elsewhere) such grants to be means-tested if the Trustees in their discretion so require. The Trustees would welcome applications from such students.

Applications for any assistance from either Charity should be made in writing to the Clerk to the Trustees:

Mrs Katherine Bunting at The Old Vicarage, Church Road, Stickford, Boston, PE22 8EP or by email to [katherine.bunting@chattertons.com](mailto:katherine.bunting@chattertons.com)

# Events – all at Stickford Community Centre unless otherwise specified

## WEEKLY EVENTS

### Wednesdays:

#### **Friendly Darts**

at the Red Lion

### Thursdays:

#### **Coffee Morning**

from 10.30 – 12 noon  
at the Community Centre (except 25th Dec and 1st Jan)

#### **Strength & Stability**

with Francesca 1pm

#### **Cash Bingo**

7pm at the Red Lion

### Sundays:

#### **Meat Raffle**

4pm followed by  
Open the Box draw  
at the Red Lion

## NOVEMBER

### **Sat 1st**

#### **Wellbeing Hub/Walk**

9am - 12 noon

### **Sun 9th**

#### **Remembrance Sunday**

10.45am at the War Memorial

### **Mon 10th**

#### **Ladies Circle**

1.30pm A "hands on" session making a Christmas centrepiece. Visitors welcome.

### **Mon 10th Prize Bingo**

Doors open 6.45pm.

Eyes down 7.30pm

### **Tue 11th**

#### **Keals Club**

2pm – Rowena will talk about the Carrington Tractor Rally, tractors and farming. Visitors welcome

### **Fri 14th**

#### **Friendly Faces**

9am – 12 noon

### **Sat 15th**

#### **Village Market**

10am -12 noon at Stickford Church

### **Tues 18th**

#### **Parish Council Meeting**

7.30pm

### **Wed 19th**

#### **Relax and Craft**

9.30am - 2.30pm

### **Thurs 20th**

#### **History Group**

7.30pm - The story of East Kirkby Airfield. Talk by Louise Bush

### **Sat 22nd Craft Fair**

from 10am - 2pm

### **Mon 24th**

#### **Prize Bingo**

Doors open 6.45pm.

Eyes down 7.30pm

### **Fri 28th**

#### **Friendly Faces**

9am – 12 noon

## DECEMBER

### **Sat 6th**

#### **Wellbeing Hub/Walk**

9am - 12 noon

### **Mon 8th**

#### **Ladies Circle**

1.30pm A fun Christmas Quiz. Visitors welcome.

### **Mon 8th**

#### **Prize Bingo**

Doors open 6.45pm.

Eyes down 7.30pm

### **Tue 9th**

#### **Keals Club**

2pm the Partney Carol Singers will entertain the members. Visitors welcome.

### **Tues 9th**

#### **Parish Council Meeting**

7.30pm

### **Fri 12th**

#### **Friendly Faces**

9am – 12 noon

**Sat 13th**  
**Carol Service**  
 3pm at Stickford Church which will be followed as usual by a barbeque with sausage patties, burgers and mulled wine and accompanied by the usual band.

**Mon 15th**  
**Prize Bingo**  
 Doors open 6.45pm.  
 Eyes down 7.30pm

**Wed 17th**  
**Relax and Craft**  
 9.30am - 2.30pm

**Thu 18th History Group** 7.30pm. A social evening. Please bring a

historical item to talk about.

**JANUARY**  
**Sat 3rd**  
**Wellbeing Hub/Walk**  
 9am - 12 noon

**Mon 5th**  
**Prize Bingo**  
 Doors open 6.45pm.  
 Eyes down 7.30pm

**Fri 9th**  
**Friendly Faces**  
 9am – 12 noon

**Mon 12th**  
**Ladies Circle**  
 1.30pm Members lunch provided by the Committee

**Tues 13th**  
**Keals Club**  
 From 2pm. Members will enjoy a light lunch to celebrate New Year.

**Thu 15th**  
**History Group**  
 7.30pm - The Demon Drink. Talk by Adam Cartwright.

**Wed 21st**  
**Relax and Craft**  
 9.30am - 2.30pm

**Fri 23rd**  
**Friendly Faces**  
 9am – 12 noon

**Sat 31st**  
**Quiz Night**  
 7pm

## CHURCH SERVICES

Held at Stickford and Stickney churches at 11.15am as follows unless otherwise stated:

<b>November</b>	<b>9</b>	<i>Stickford</i>	<i>Remembrance</i>	<i>10.45</i>
<b>November</b>	<b>16</b>	<i>Stickney</i>	<i>Holy Communion</i>	<i>11.15</i>
<b>November</b>	<b>23</b>	<i>Stickford</i>	<i>Service of the Word</i>	<i>11.15</i>
<b>November</b>	<b>30</b>	<i>Spilsby</i>	<i>Deanery Holy Com.</i>	<i>10.00</i>
<b>December</b>	<b>7</b>	<i>Stickney</i>	<i>Service of the Word</i>	<i>11.15</i>
<b>December</b>	<b>13</b>	<i>Stickford</i>	<i>Carol Service &amp; BBQ</i>	<i>15.00</i>
<b>December</b>	<b>14</b>	<i>Stickford</i>	<i>No Service</i>	
<b>December</b>	<b>21</b>	<i>Stickney</i>	<i>Holy Communion</i>	<i>11.15</i>
<b>December</b>	<b>28</b>	<i>Stickford</i>	<i>Service of the Word</i>	<i>11.15</i>
<b>January</b>	<b>4</b>	<i>Stickney</i>	<i>Service of the Word</i>	<i>11.15</i>
<b>January</b>	<b>11</b>	<i>Stickford</i>	<i>Holy Communion</i>	<i>11.15</i>
<b>January</b>	<b>18</b>	<i>Stickney</i>	<i>Holy Communion</i>	<i>11.15</i>
<b>January</b>	<b>25</b>	<i>Stickford</i>	<i>Service of the Word</i>	<i>11.15</i>

# WHAT'S ON LOCALLY...

**1st November**  
**Bingo** at the Youth  
Hall, Stickney - all  
proceeds to St  
Barnabas Hospice

**5th November**  
**Rotary Club Firework  
Night** at the Pavillion,  
Spilsby

**22nd November**  
**Bingo** at the Youth  
Hall, Stickney  
organised by Stickford

Ladies Social Circle  
**6th December**  
**Cracker Day and  
Light Switch On** in  
Spilsby

**12th December**  
**Rotary Club Carol  
Concert** St James  
Church, Spilsby



**For a plethora of events at the Embassy Theatre including the Hits of Abba, Nashville at Heart, A Fairytale for Christmas, The Wizard of Oz, and more, please visit <https://embassytheatre.co.uk/whats-on/>**

.....  
*For further details, explore the websites below for ideas on places to visit, activities to try, dog-friendly spots, dining options, and much more. Have fun and enjoy!*

allevents.in/Lincolnshire  
boston-england.co.uk  
www.doddingtonhall.com  
embassytheatre.co.uk  
www.jubileeparkwoodhallspa.co.uk/  
www.lincolnshirellama.co.uk  
lovelincolnshirewolds.com  
nationaltrust.org.uk  
<https://www.southormsbyestate.co.uk>  
visitlincoln.com  
visitlincscoast.co.uk

www.belvoircastle.com  
www.burghley.co.uk  
www.elshamhall.co.uk  
gunbyhall@nationaltrust.org.uk  
lincolncastle.com  
www.lincolnshirewoldsrailway.co.uk  
magnavita.org  
www.sandringhamestate.co.uk  
thehiveskegness.co.uk  
visitlincolnshire.com  
www.thekinemainthewoods.co.uk

# USEFUL INFORMATION

## Police

Non-emergency: 101

Emergency: 999

spilsby.npt@lincs.pnn.police.uk

Website: [www.lincs.police.uk](http://www.lincs.police.uk)

Twitter: @SpilsbyPolice

**Childline:** 0800 1111

Website: [www.childline.org.uk](http://www.childline.org.uk)

## Domestic Abuse

**Helpline:** 0808 2000 247

[www.nationaldahelpline.org.uk](http://www.nationaldahelpline.org.uk)

**Samaritans:** 116 123

## NHS Mental Health Matters

24/7: 0800 0014331

Text SHOUT to 85258

## If you have a Safeguarding concern contact:

Children's safeguarding: 01522

782111 (Mon to Fri, 8am to 6pm)

Adults safeguarding: 01522 782155

(Mon to Fri, 8am to 6pm)

or 01522 782333 (outside office hours)

## Doctors

**Stickney Surgery** 01205 480237

Get directed to the best place

for help with your symptoms:111

**Spilsby** 01790 728111

**Pilgrim Hospital** 01205 364801

## Taxi

Lanes Travel Stickney

07766 448849

## Reporting Scams

**Action Fraud** – 0300 123 2040/[www.actionfraud.police.uk](http://www.actionfraud.police.uk)

to report any kind of fraud

**Reporting scam email** – forward to [report@phishing.gov.uk](mailto:report@phishing.gov.uk)

**Reporting scam text** – forward it to 7726

**Post Office Van:** The Post Office van calls at the **Red Lion car park** every **Monday morning between 11.30am and 12.30pm**. You can buy stamps and cards, post letters and parcels and do your everyday banking.

**Charity Bus Dates:** **12<sup>th</sup> November – Boston, 11<sup>th</sup> December – Horn-castle and January – TBC (please check the date with Pam Bryant)**

**Stickford Community Centre**

**bookings:** Hannah on 07356

054609 or [events@stickfordcc.uk](mailto:events@stickfordcc.uk)

## Eve Project

**Women's wellbeing support group**

<https://www.facebook.com/eveprojectuk>

## Bro Pro

**Men's wellbeing support group**

<https://www.facebook.com/brotherhoodprojectuk> or DM / WhatsApp on 07939 092585

# Here to make life easier

*Personalised visiting care and home care in Stickford  
and the surrounding area*

Our dedicated teams of carers in Boston, Horncastle and beyond provide friendly, personalised home care throughout the area. Whether you need daily visits, occasional help, or full-time support, we're here to make life easier. With a team that genuinely cares, we go the extra mile to ensure you or your loved one feels safe, valued, and supported every step of the way.

Clarity Homecare Boston is a private homecare provider, not a care agency. We employ and train all our carers in-house, so you don't have to worry about paying them directly or finding cover when they are unavailable.

We're open and honest about our costs, with no hidden charges or confusing paperwork; you will always know what you're paying for. Because we centre our business around the welfare of our wonderful carers, they enjoy job security and can fully focus on providing the best possible care, giving you peace of mind and support you can rely on.

Please do not hesitate to contact us to discuss how we can help you or your loved one.

- Boston: 01205 386 086
- Horncastle: 01507 851 570
- Spalding: 01775 567 089



## Scam & Fraud Awareness Day

We recently held a Scam & Fraud Awareness day. For those who couldn't attend, or would like to help protect their parents, grandparents, good friends, etc, there is information available from Age UK on

**0800 169 65 65**

(8am - 7pm, 365 days a year).

You can order any of their guides or fact sheets. Their friendly advisers are there to help answer any questions. All publications are available in large print and audio formats.

Or visit their website [www.ageuk.org.uk/homesafety](http://www.ageuk.org.uk/homesafety) to get started.



Are you seeking  
*Homecare Support?*  
We are here to help!



The range of services we offer

Personal Care

Shopping Assistance

Home Help

Night Care

Companionship

Dementia Care

Respite Care

Palliative Care

Live-in Care

Hospital Discharge

For a free assessment  
give us a call on:



[www.clarityhomecare.co.uk/boston](http://www.clarityhomecare.co.uk/boston)

**01205 386 086**

# QUIZ NIGHT

**SATURDAY, 31<sup>st</sup> January**

**AT 7:00pm**

**Doors open 6:15pm**

**£4 per person / 4-6 a team**

*Tea and coffee available  
before & midway  
you may also bring your  
own drinks & nibbles*



**The proceeds of the Quiz  
will go to a charity to be  
confirmed**

Organised by the Stickford Village defibrillator team  
Teams must enter / limited space. Please contact  
Jennie 07966 139641 or Alan 07572 189466



# The Green House

Fashion Boutique



Ladies Clothing, Accessories  
& Dry Cleaning

THE GREEN HOUSE  
38 HIGH STREET,  
SPILSBY, PE23 5JH



INFO@GREENHOUSEGN.CO.UK



The Green House Spilsby



Thegreenhouse spilsby

## What We Offer

- High Quality Clothing & Accessories
- Personal Shopping Experience
- Gift Vouchers
- Dry Cleaning Service



Only valid with a mention of this advert

## 34 Years on Spilsby's High Street

Founded in 1991 with the dream of bringing a stylish ladies' fashion boutique to Spilsby, The Green House has proudly stood the test of time. Now, 34 years later, we're still here on the High Street—offering high-quality clothing and a truly personal shopping experience.

Thank you for being part of our journey.



Scan Here

TO JOIN OUR VIB MAILING LIST OR  
SPECIAL OFFERS AND EVENTS

CALL IN AND SEE US

Open Mon-Sat 10-4pm

01790 753765